



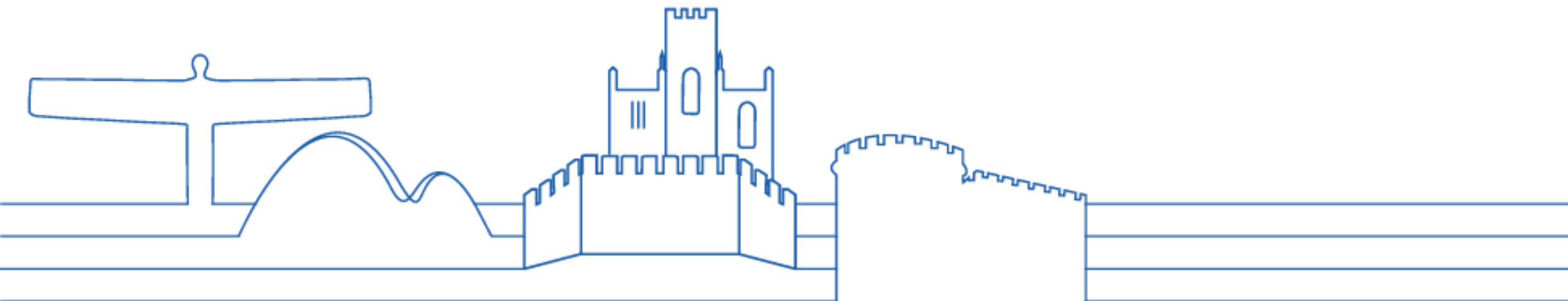
**North East and
North Cumbria**

General Practice in North East & North Cumbria

Dave Gallagher, Executive Area Director (Tees Valley & Central) and Primary Care SRO

Joseph Chandy, Director of Primary Care Transformation

Board Meeting – 30 May 2023



Primary Care in the North East and North Cumbria



Medical Services (General Practice)



Dental Services



Ophthalmic Services



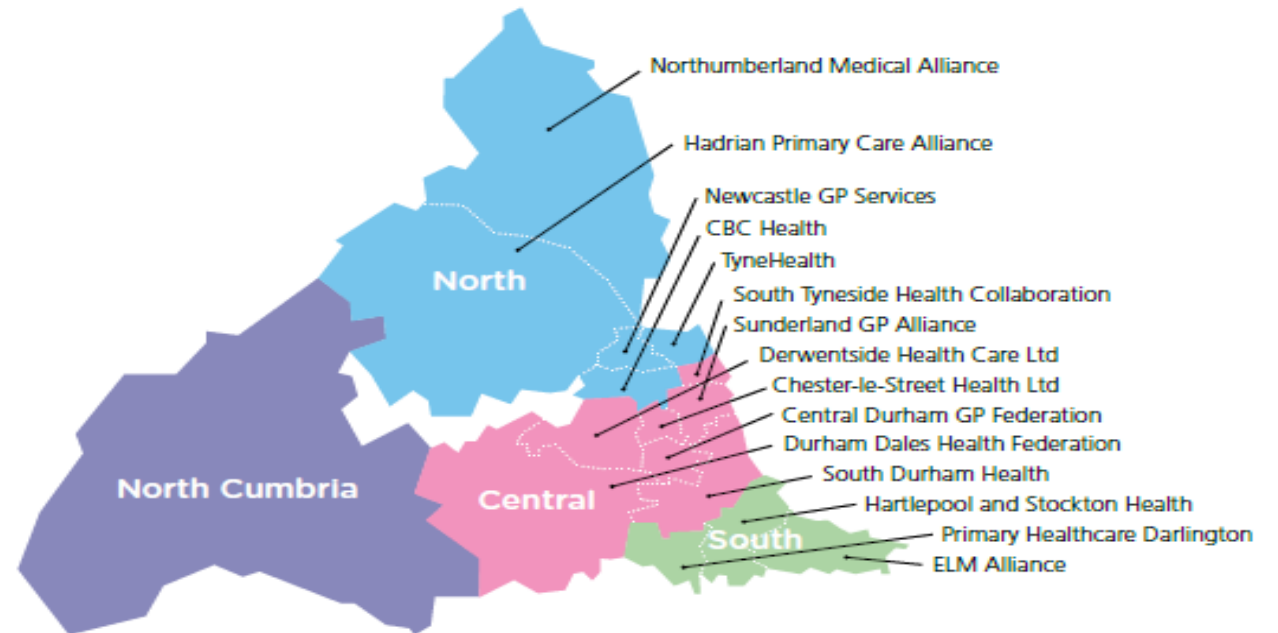
Pharmaceutical Services

The ICB commissions these services under delegation from NHS England and working within a number of national regulations

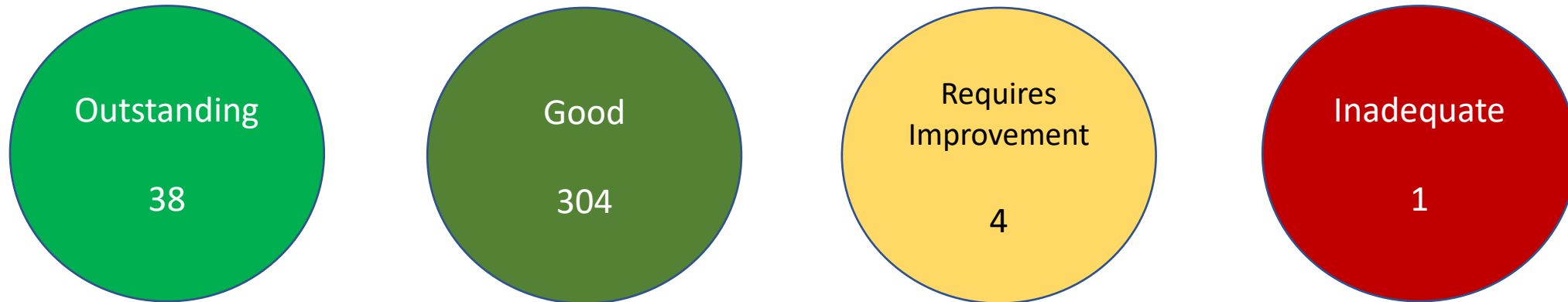
General Practices, Primary Care Networks & Federations in North East and North Cumbria

	Practices	PCNs
Sunderland	38	6
South Tyneside	21	3
Gateshead	25	5
Newcastle	29	7
North Tyneside	24	4
Northumberland	36	7
Cumbria	34	8
Durham	61	13
Darlington	11	1
Hartlepool	11	3
Stockton	21	4
Redcar & Cleveland	20	2.5
Middlesbrough	16	3.5
Total	347	67

15 GP Federations



An independent view of the quality of general practices in the North East & North Cumbria



Access to general practice in the North East and North Cumbria is compared favourably to the England average



North East and
North Cumbria

As at March 2023

	NENC	England
Appointments per 1000	559	509
% face to face	75%	70%
Same or next day	41%	43%
Within 14 days	13%	14%

The size of the work force in general practice in the North East & North Cumbria



GP 1928

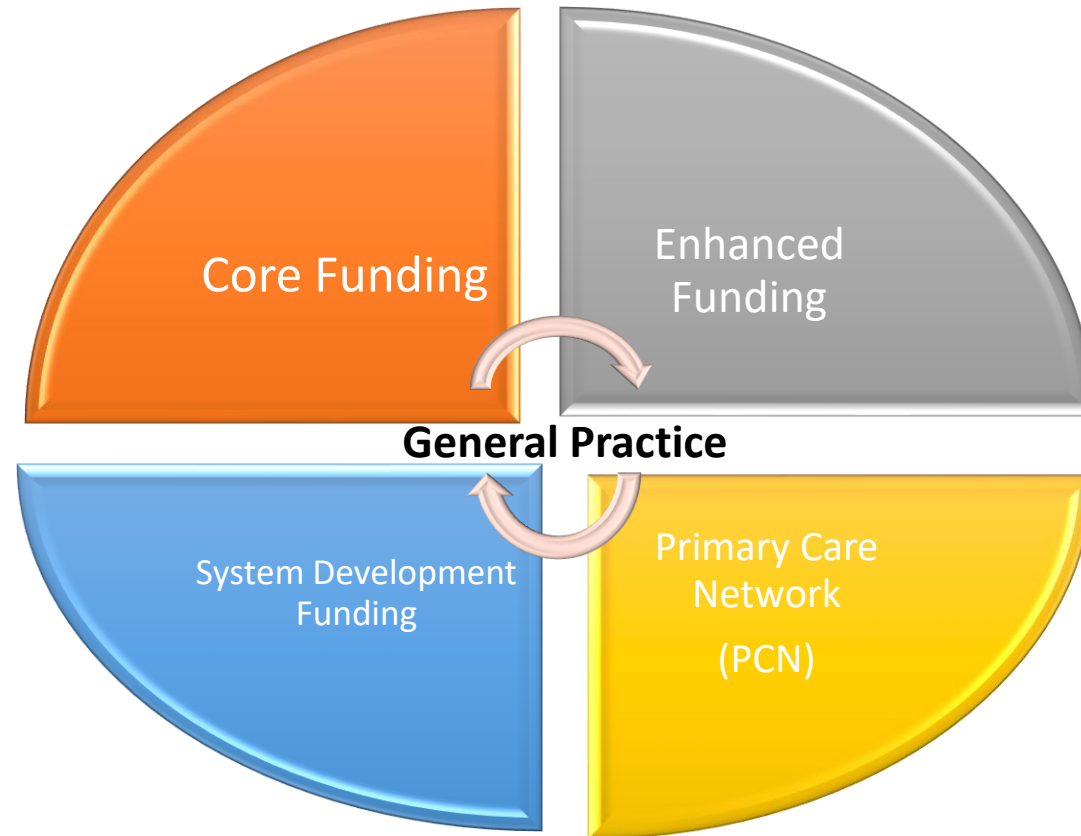


NURSE 1233

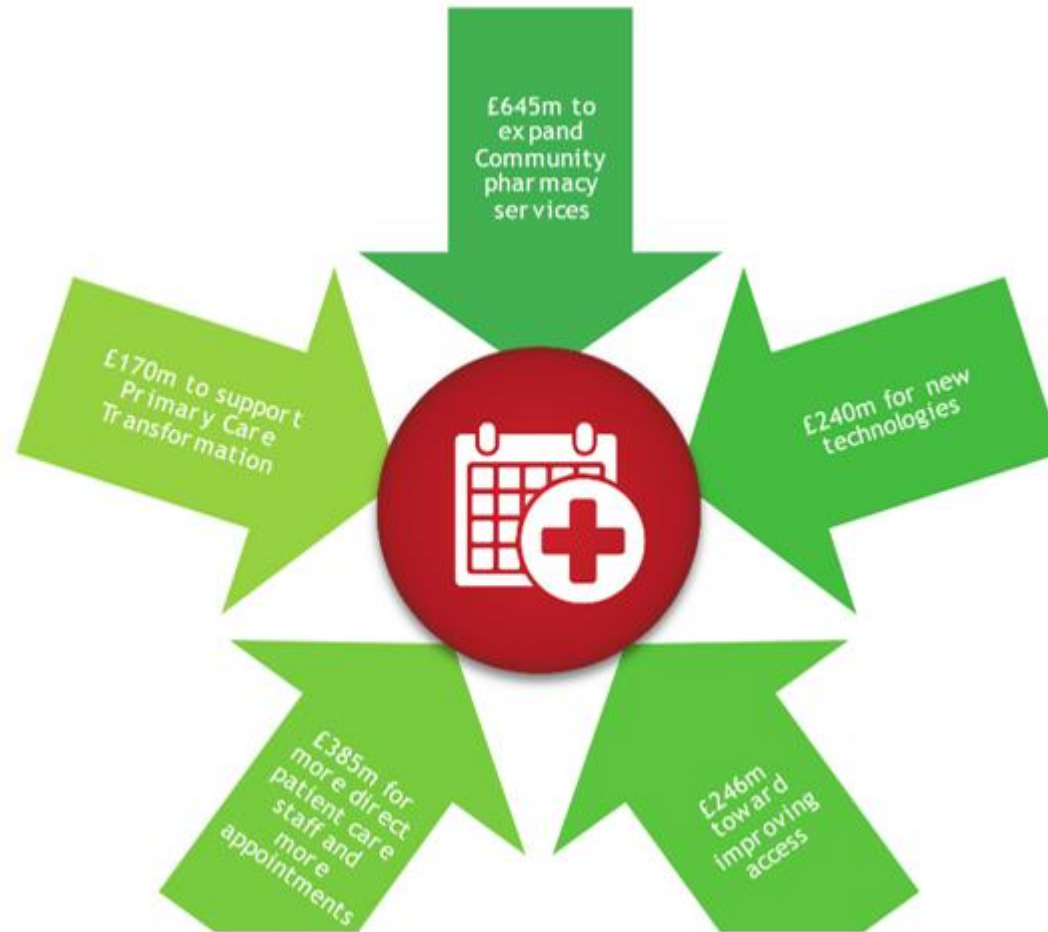


OTHER ROLES 1888

There are a number of elements to the funding of general practice



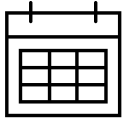
The national Primary Care Access Recovery Plan has additional funding



Recovering Access to Primary Care introduces some targets for improvement by March 2024



North East and
North Cumbria



50 million appointments



6,000 new GPs



26,000 additional roles in general practice



Tackle the “8am rush” and people struggling to contact their practice



Patients know on the day they contact their practice how their care will be managed

Steps in the National Access Recovery Plan





RECENT GENERAL PRACTICE SUCCESSSES

Post covid
recovery and
more GP
appointments

Flu vaccination

Covid Vaccination

Increased
prevention
Screening

Developing
Primary Care
networks

Employing new
additional roles

Digital – Photo
and Video
Consultations and
contact by SMS

Day to day challenges in general practice

Long & short term
staff shortages

Locum and agency
costs

Abuse to staff

Pension challenges

Increased demand

Media & social
media abuse

Fear of litigation

Patient expectations
fuelled by the
media

Time for supervision
of new roles

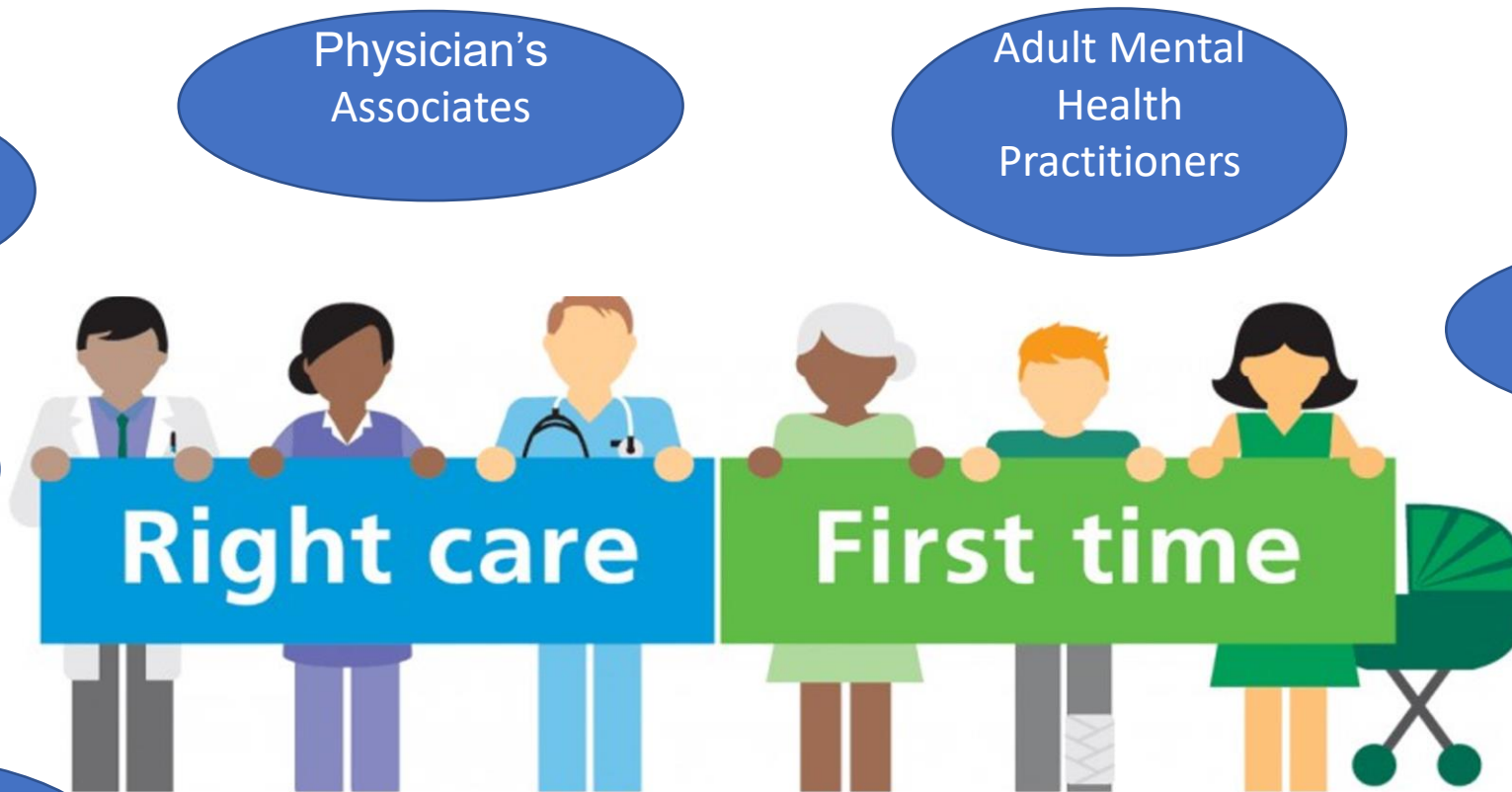
Lack of space for
new roles and
training

CQC anxieties

Inflation

High levels of
bureaucracy

There are additional roles in general practice



Clinical Pharmacists

Physician's Associates

Adult Mental Health Practitioners

First Contact Physiotherapists

Advanced Practitioners

Paramedics

Care Navigators

Care Coordinators

Social Prescribing Link Workers

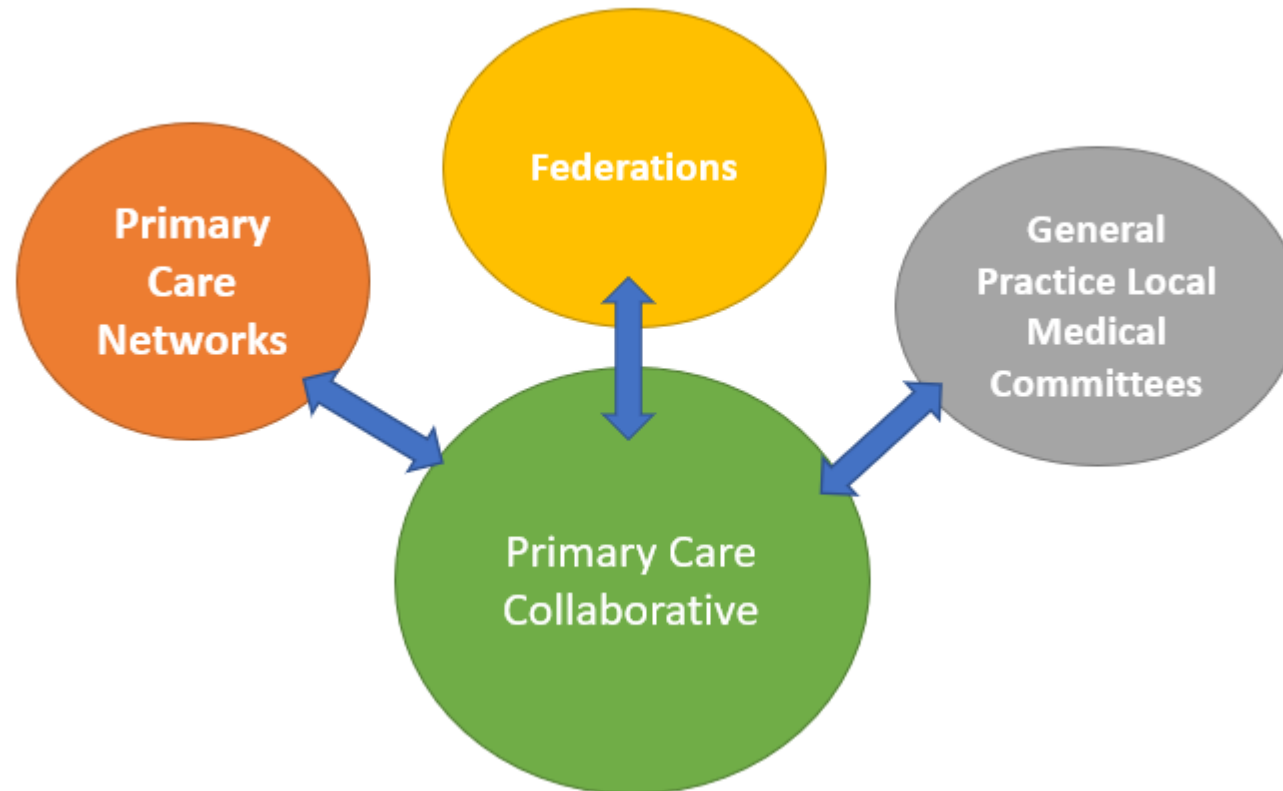
Pharmacy Technicians

Digital and Transformation Lead

Building Resilience in primary care

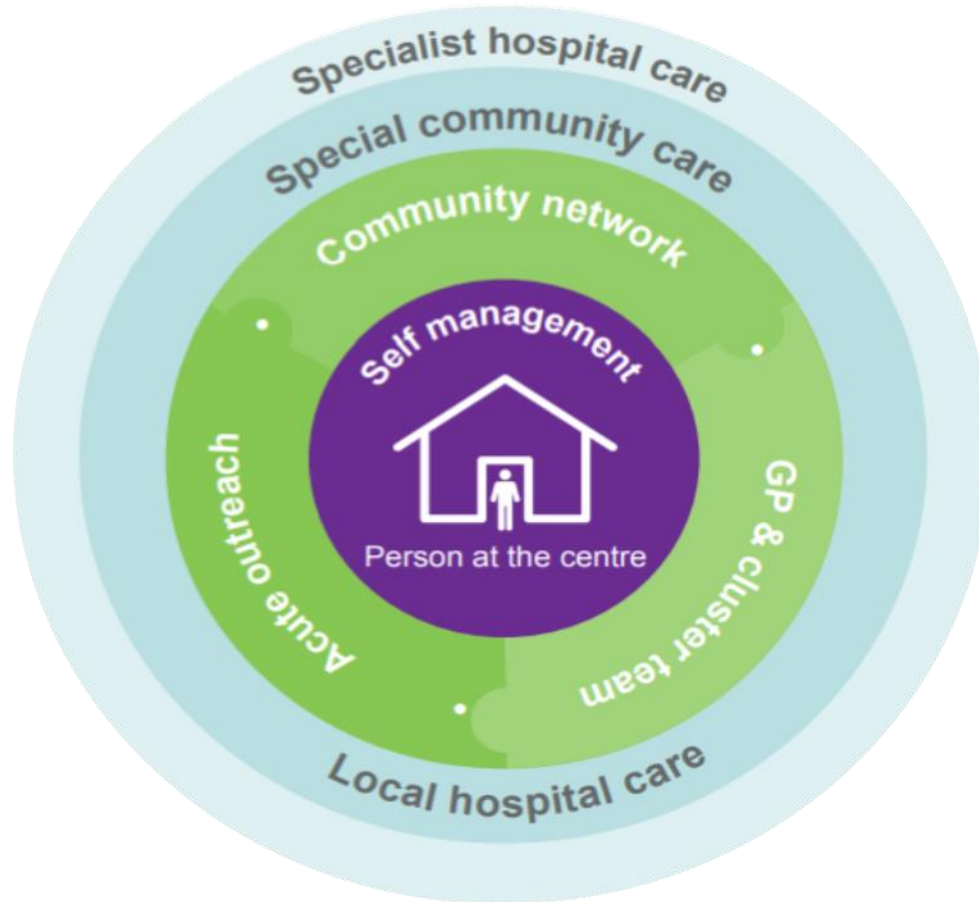
- Workforce hubs with training programmes for each professional groups
- Recruitment and Retention programmes for General Practitioners
- Developing a plan for the future of practice premises
- Funding to improve digital technology and empower patients

Enhancing Primary Care Collaboration in North East & North Cumbria – Developing one voice



Will incorporate Pharmacy, Optometry and Dentistry

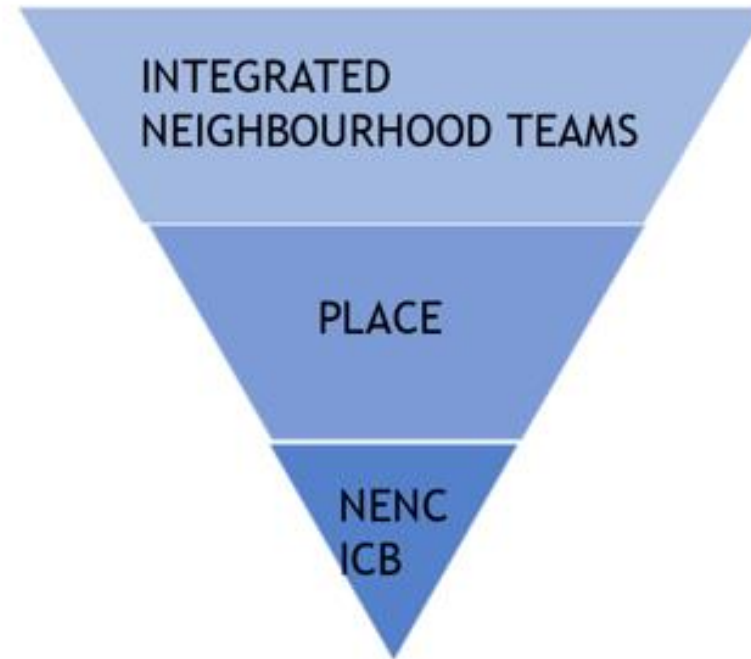
The North East and North Cumbria ICB approach to Developing Primary and Community Care



Professor Claire Fuller, Chief Executive, Surrey Heartlands Health and Care Partnership

Shifting the centre of gravity from acute to self care via Integrated Primary Care

North East and North Cumbria Layered Approach



Community Pharmacy opportunities to serve wider population needs

Primary Care Access Recovery plan gives a big challenge to the sector:

- Expanding ' Pharmacy First ' role in Recovery Plan- launch nationally by Oct 2023
- Expanding role of CP in independent prescribing for minor conditions
- Expanding list of minor conditions UTI which is successful in NENC with short term funding; blood pressure monitoring, shingles, ear ache, sore throats, etc.)
- Oral contraception
- Workforce reform
- Potential hub and spoke model of dispensing

How do we perform with prescribing in the north East & North Cumbria?



North East and
North Cumbria

Based upon data to the end of Feb 2023:

- We prescribe more, and spend more on medicines, than England average, but it is growing more slowly in NENC (6.42% year on year increase, versus 7.3% nationally)
- We prescribe a higher volume than almost any other ICBs
- Our spend per prescription is low
- Prescribing activity is closely linked to deprivation and highly reflective of demographics. More people are living longer with poor health and long term conditions
- We prescribe too much for treatment and symptoms, and not enough for prevention
- Deprivation – more people with long term conditions and poor health

There are opportunities to improve working between primary and secondary care



North East and
North Cumbria

Challenges

- Historic differences in prescribing resulting in inequities
- Inconsistencies between hospitals in approaches to out-patient prescribing
- Ownership of the cost of private provider aftercare
- Separate primary care and secondary care prescribing budgets and data sets

Opportunities

- Production of one formulary for ICS hosted on one website
- Development of one governance system for medicines within the ICS
- Trials of electronic transfer of prescriptions from hospitals within our ICS
- New perspectives on prescribing budgets and data sets

Integrated Care Communities (ICCs) in North Cumbria



North East and
North Cumbria



[1. Carlisle Healthcare ICC](#)

[2. Carlisle Network ICC](#)

[3. Carlisle Rural ICC](#)

[4. Copeland ICC](#)

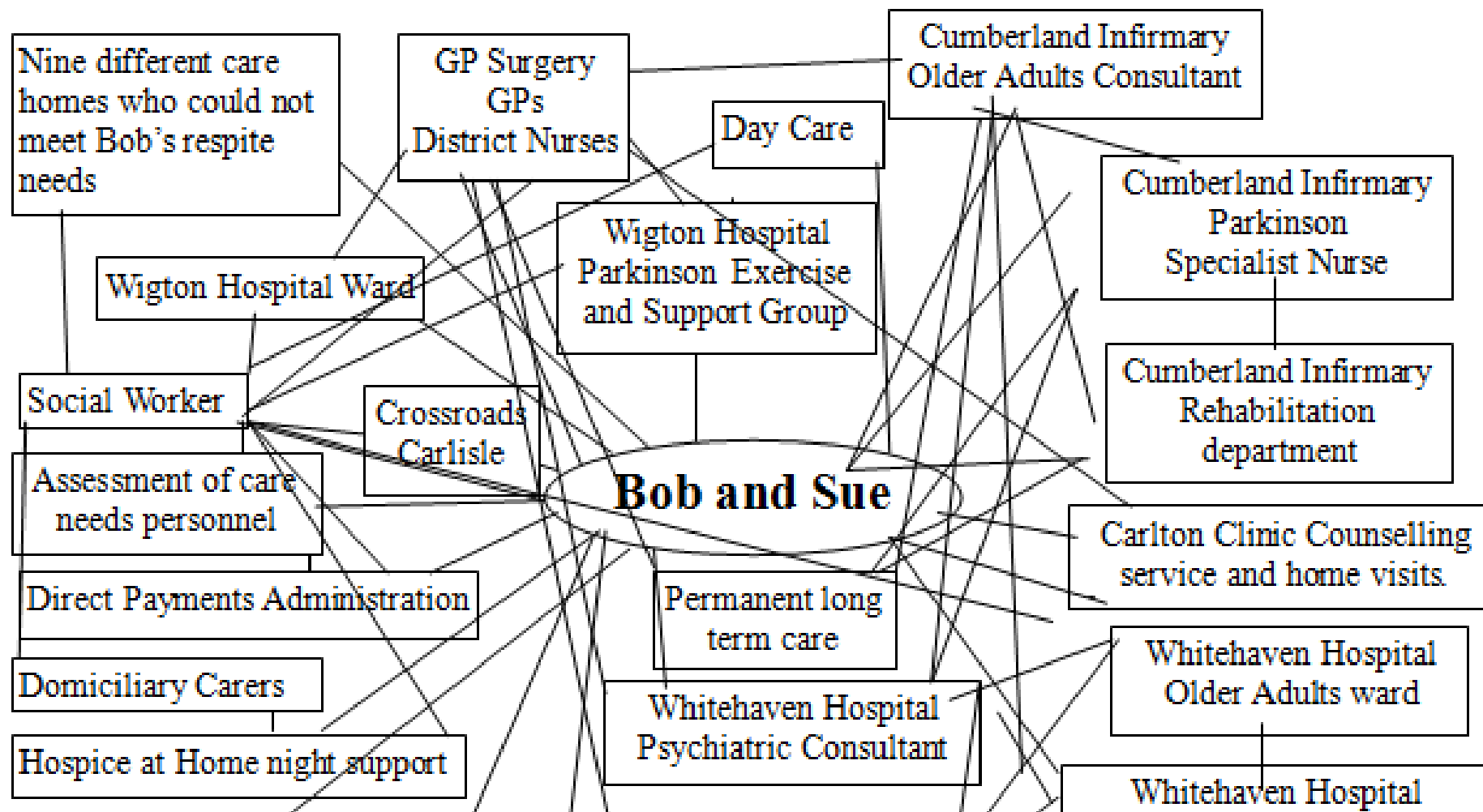
[5. Eden ICC](#)

[6. Keswick and Solway ICC](#)

[7. Maryport and Cockermouth ICC](#)

[8. Workington ICC](#)

Reducing complexities for patients like Bob and Sue

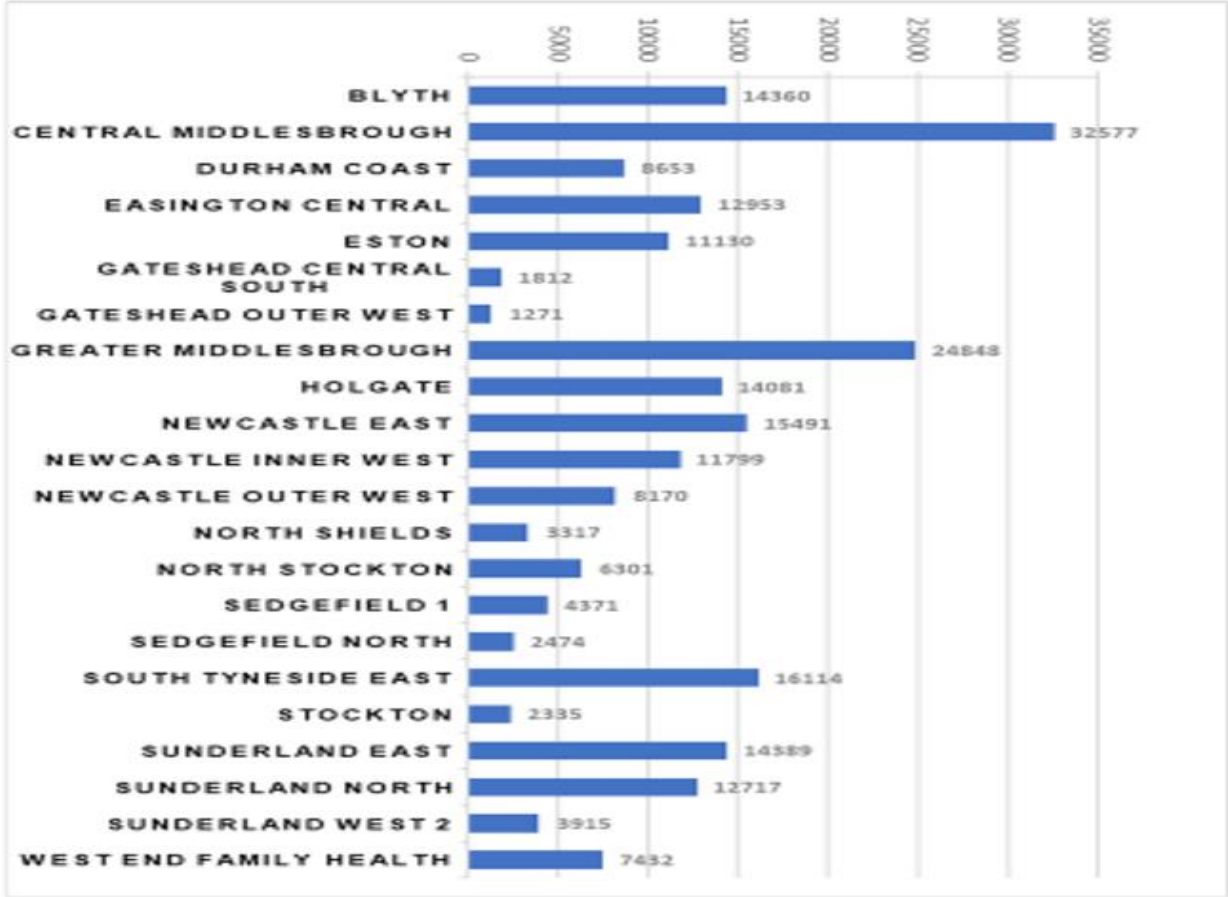




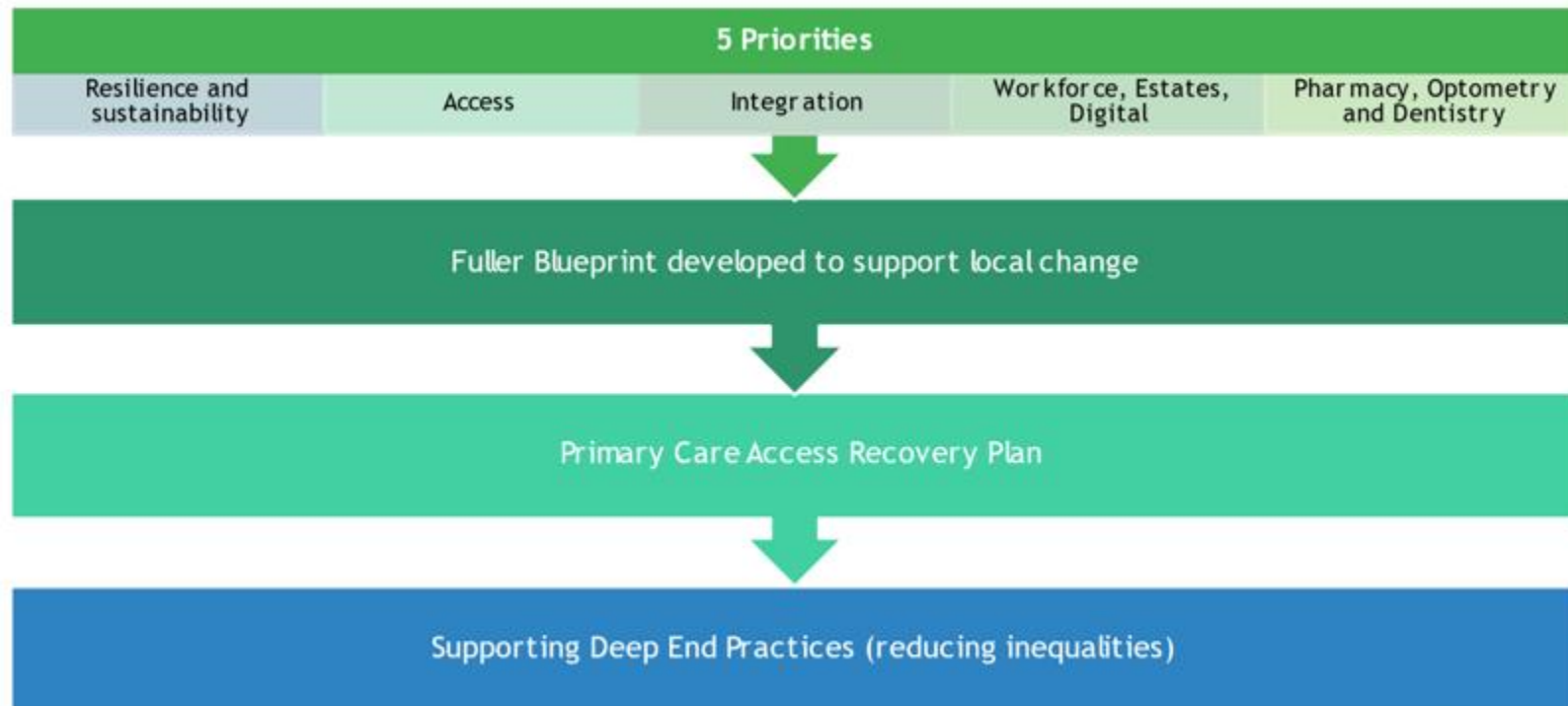
Tackling health inequalities through Deep End practices in the North East & North Cumbria



North East and North Cumbria



The developing Primary Care Forward Plan in the North East & North Cumbria





Aneurin Bevan

General practice continues to develop as a key component of care “from cradle to grave”