

Introduction to the Secure Data Environment for GP Practices



Thursday 3rd April 2025,
15:00-16:00, Online

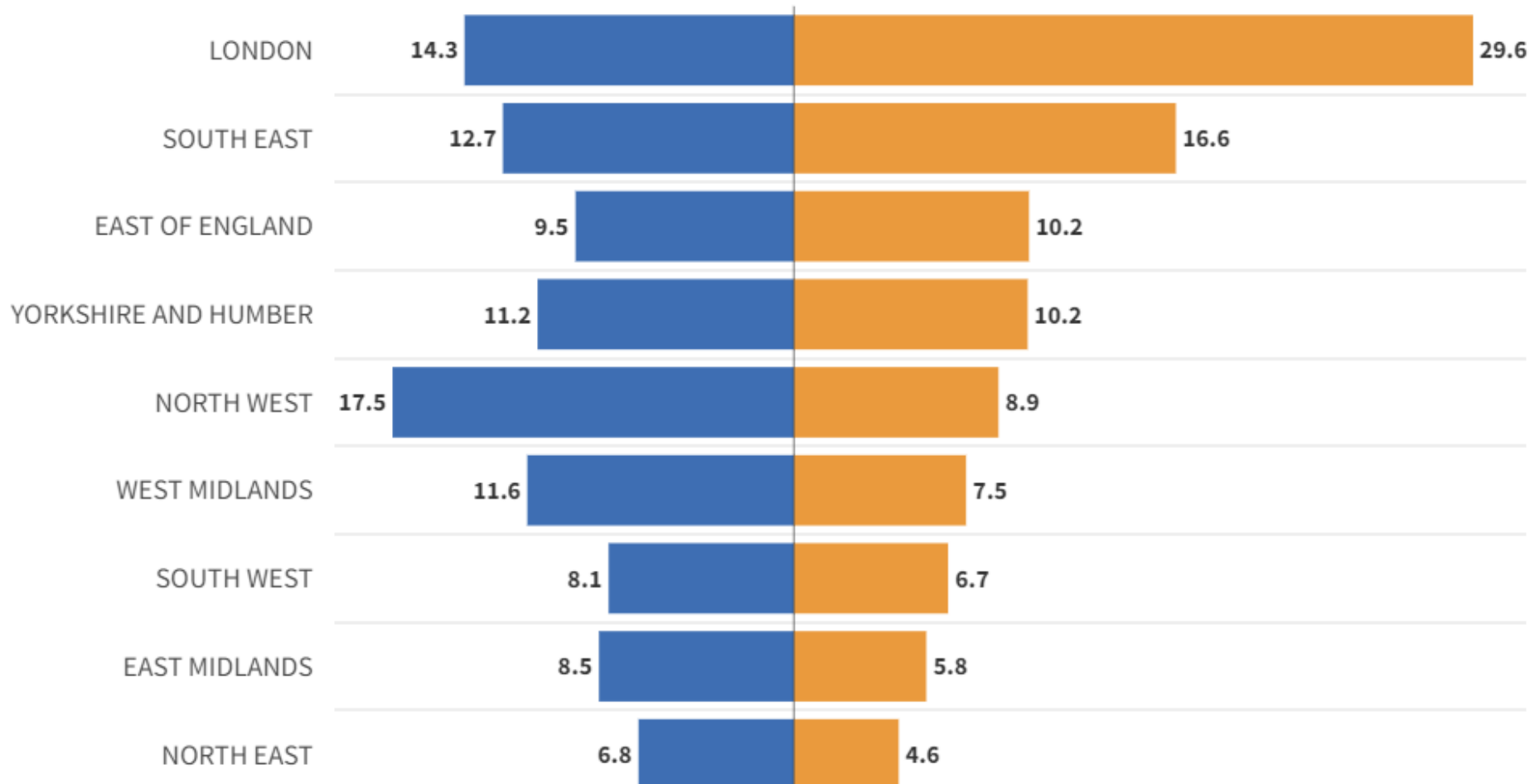
- Please ensure your microphone and video are turned off during the session. This is to avoid any disruption during presentations and to assist with the quality of the connection.
- If you need to take a break, please feel free to drop off the call at any time and re-join.
- Live captions are available if required.
- The event is being recorded and will be shared.
- Please ask any questions you have through the chat facility. The programme team will try to address questions during the webinar, but if we don't manage to do this we will follow up after the event.
- If you cannot see the chat, please email your question/s to kathryn.brennan@healthinnovationnenc.org.uk

Welcome and introductions

Programme overview

Dr Mark Dornan

■ Percentage share of population (weighted for health need) ■ Percentage share of NIHR funding in 2022-23



Benefits of Secure Data Environment

For primary care

- More opportunity to patients to take part in data-driven research
- Data protected through robust and legal process.
- Ongoing volume and management of requests becomes less resource intensive
- Potential revenue source

For researchers

- Provides linked data from different places
- Single point of approval

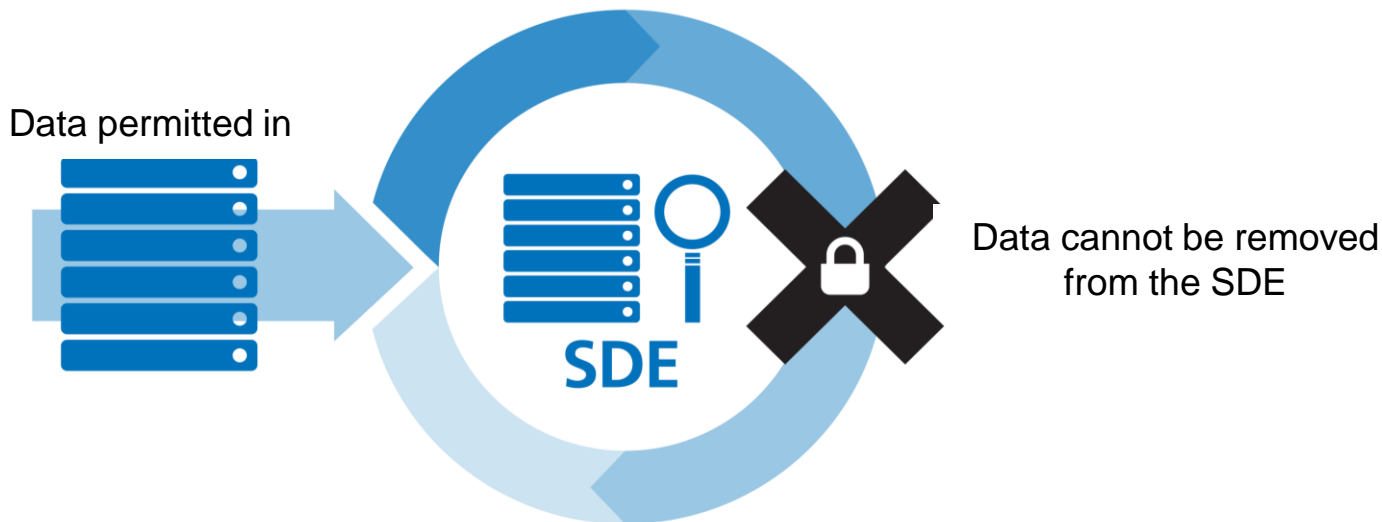
For the public

- Uses of data are transparent
- Patient and members of the public involved in decision making and policy setting
- Opt out options available giving patient choice
- More opportunity to take part in more research

What is a Secure Data Environment?

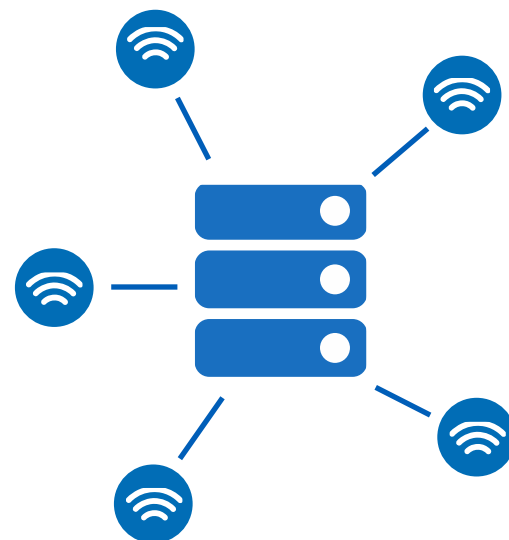
A move from **data sharing** to **data access**

Researchers can only access
data whilst in the SDE



How will we create this?

- Develop a regional research and development database
- Regular data flows from data contributors – hospitals, GPs, ambulance, mental health, social care
- Reduce workload and complexity for data controllers
- Respects confidentiality of data



Which projects will the SDE be used for?



**AI/algorithm
development**
(testing, training,
and validation)



**Clinical trial
activities**
(feasibility,
recruitment,
efficacy through
short- and long-
term trial follow up)



**Real world
studies** (safety,
effectiveness, cost
effectiveness)



**Translational
research** (academic
discovery and
implementation
of discovery into
practice)



**Epidemiological
studies** (large
cohorts for
population health
research)

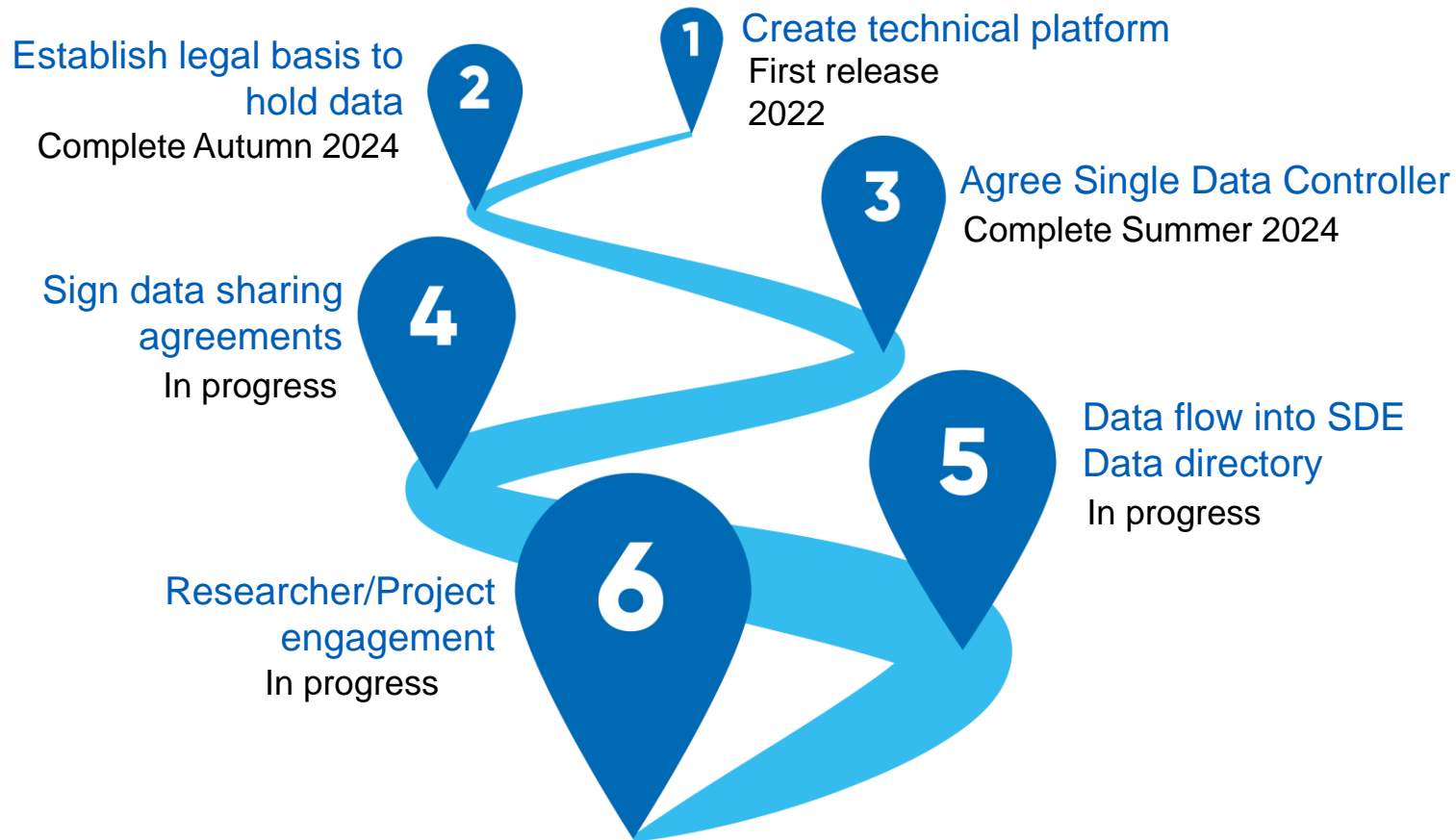


**Health systems
research**
(evaluation
of systems or
processes, including
operational and
applied research)

Programme update

Mark Walsh, Programme Lead

Hils Poole, Information Governance Lead



Primary care engagement to date

Advice and guidance from:

- Regional LMC
- ICB CCIOs
- Group of GPs interested in research, data and digital
- Collective action

GP pilots

- 2 confirmed (Emis, TPP S1)
- Testing process
- Review resource impact especially on practices
- Communications to patients
- Data sharing agreements – Information Sharing Gateway

Local collaborative opportunity

- Range of data and ability to link datasets brings unique opportunities for the region, for example, improved health outcomes, efficiencies and economic benefits
- Increased grant partner opportunities
- Increased commercial income from partnerships
- Research and non-research opportunities, including conducting projects that are not currently possible or very challenging



Ian Campbell

Retired Pharmacist

*Newcastle upon Tyne Hospitals NHS
Foundation Trust*



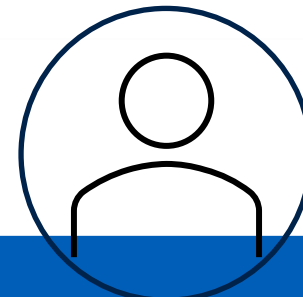
Arne Wolters

Head of Improvement Analytics
*Cumbria, Northumberland, Tyne and
Wear NHS Foundation Trust*



Amanda Taylor - Beswick

Digital Social Scientist
Cumbria University



Gareth Coakley

Chief Clinical Information Officer
and GP
NENC ICB



Liane Cotterill

Senior Governance Manager and
Data Protection Officer
NENC ICB



Nehal Hassan

Pharmacist and Public Health
Researcher
Newcastle University



Kim Keltie

Lead Healthcare Scientist
*Newcastle upon Tyne Hospitals NHS
Foundation Trust*



Aaron Jackson

Research Governance Manager
*Newcastle Upon Tyne Hospitals NHS
Foundation Trust*



Joe Millar

Research and Development Manager
*Tees, Esk and Wear Valleys NHS
Foundation Trust*



Jon Rees

**Associate Professor of Applied
Research Methodology**
University of Sunderland



Emily Turnbull

Informatics Manager
Northeast Ambulance Service



Daniel Weiland

Consultant Medical Microbiologist
*Newcastle Upon Tyne Hospitals NHS
Foundation Trust*



Chris Llyod

Public Member
NENC SDE



Linda Pepper

Public Member
NENC SDE



Rosemary Nicholls

Public Member
NENC SDE



Roland Finch

Public Member
NENC SDE

Information governance



Use of anonymised or pseudonymised data

Data remains in the NHS



Compliant with UK law ensuring confidentiality is maintained

One data controller



Contracts and data sharing agreements in place

Complies with GMC guidance

Patient and public involvement and engagement

North East and North Cumbria-wide

- 16 public members – more being recruited
- Public Evaluation Group
- 1800 public survey contacts
- Focus group programme
- Involving communities

National

- National citizen's deliberation events, included Newcastle



Regional communications campaign


- Funds set aside for regional advertising campaign to raise awareness
- Key messages:
 - Benefits of use of data for research and planning
 - How we keep information safe
- GPs will be provided with comms toolkits

Health information improves lives

NHS

How your health information improves lives

Your health and care records help us care for you. They also have the power to unlock new treatments, medicines and devices.



North East and North Cumbria
SECURE DATA
ENVIRONMENT

Health information improves lives

NHS



Tyler's health information

helps asthma researchers like Maria develop better drugs

so Liam can carry on playing for his team

Your health and care records help us care for you, but also have the power to improve the health of your whole community and future generations.

North East and North Cumbria
SECURE DATA
ENVIRONMENT

To find out more scan the QR code or call 0191 916 9353



Next steps

- GP pilots – now to June
- Regional GP engagement – start June

General enquiries nencicb.sde@nhs.net

Questions for the programme team?

Pop in the chat or raise your hand

Find out more

Visit our website



General enquiries nencicb.sde@nhs.net