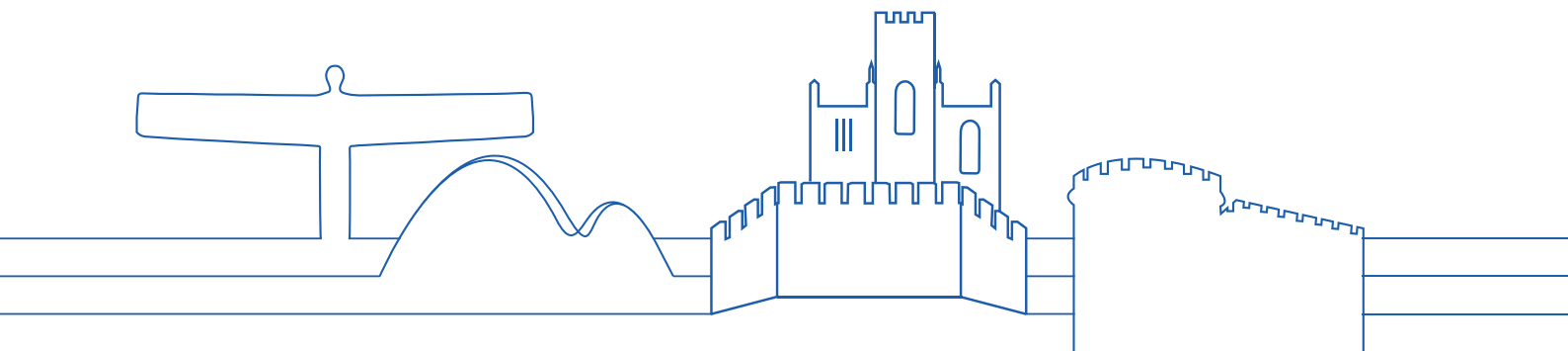




**North East &
North Cumbria**

**Working together for
happier and healthier lives**

**An Integrated Care Board
for the North East and North Cumbria**



INTRODUCTION

Improving the health of our communities needs the support of different professionals and services across many organisations – not just the NHS.

We also know that our health is strongly influenced by other factors too; where we live, our lifestyle, education and the employment opportunities available to us. That's why we are transforming how the NHS works together across its many different services and strengthening the connections we have with local councils, community and voluntary services and the many others who look after the health and care of our communities.

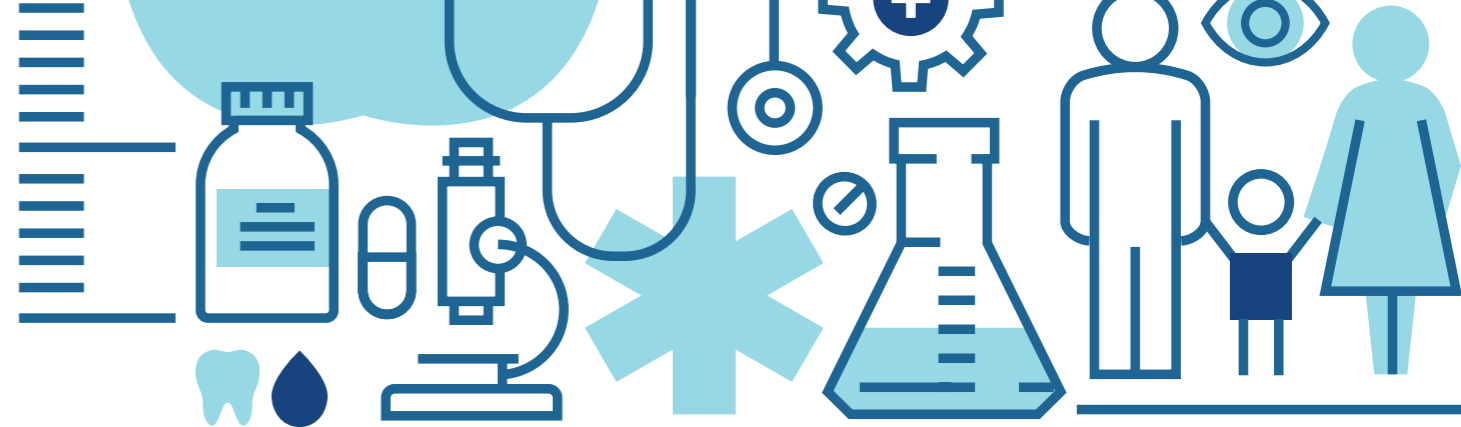
We are creating a new NHS organisation called an Integrated Care Board (ICB). It is part of our Integrated Care System (ICS) - a way of working that will see all organisations across the region combining their collective resources and expertise locally, and regionally, to plan, deliver and join-up health and care so our communities can live happier and healthier lives. It's about us all working together to break down the barriers that sometimes exist between the different parts of our health and care system.

And with a £6 billion budget, a workforce of 170,000 and 2.9 million people to look after across the North East and North Cumbria – it's an exciting opportunity and challenge!

“By working together - as a system - we are building on the strong history of joint working and the excellent care provided in the region.”

Professor Sir Liam Donaldson, ICB chair

02



MUCH TO BE PROUD OF...

Performance

We have much to be proud of in our region. We have some of the most accessible primary care services and best performing emergency care in the country, alongside a record of ground-breaking surgery and pioneering new treatments, world-class facilities and national centres of excellence.

We are proud too of 'an outstanding record of being outstanding', with high and improving Care Quality Commission (CQC) scores across the region.

Innovation

We have some of the best research and development programmes of any health system, developing the next generation of treatments, procedures and cures (including world leading genetic research programmes), alongside dedicated research capacity through our Academic Health Science Network and Applied Research Collaborative.

Public health

While our health and care services are consistently rated amongst the best in the country, our public health remains amongst the worst. We have a clear ambition to change this. By working with local communities, our partner organisations and our amazing health and care staff, our aim is to significantly improve this picture. In recent years, we have made huge progress in some key areas including a continued fall in the rates of stroke and heart attacks, and a decline in the prevalence of smoking in adults and teenage pregnancies.

03

OUR ICS

Our Integrated Care System (ICS) is a partnership of organisations that provide health and care across the North East and North Cumbria.

It's a way of working that will see all partners coming together to improve the health of our communities and reduce the health inequalities that exist across the region.

Our ICS is led by our NHS Integrated Care Board (ICB), an organisation with responsibility for NHS budgets, functions and performance and an Integrated Care Partnership (ICP).

OUR ICB

The ICB will replace and take on the responsibilities of the eight clinical commissioning groups (CCGs), and, over time, some of the functions currently held by NHS England for the commissioning of primary care and specialist acute services. It will be responsible for working with our ICP to deliver and develop a health and care strategy for the region.

As well as its strategic functions, ICB staff will work locally with health and wellbeing boards (HWBs) in each of our 13 local authority areas. The ICB's place-based teams will also work alongside our 64 primary care networks (PCNs) which are groups of local GP practices, social care teams and other community-based care providers.

The ICB will work too with our Provider Collaborative. The collaborative includes the 11 NHS foundation trusts in the North East and North Cumbria and will play an important part in enabling us to deliver our shared priorities.

04

WHY CHANGE?

Most people agree that we need to change how we do things to provide more joined-up care and reduce the inequalities that exist across our region. Creating an ICB presents a new momentum for us to **combine our collective resources and expertise to make faster progress.**

The need to do this is greater than it has ever been. With a growing and aging population **there are more demands on our health and social care services than ever before. The pandemic has shown us first hand, what we can achieve when we work together.**

The ICB will be responsible for ensuring that high quality and safe health services are accessible to all our communities. It will have a wide range of functions including: **promoting integration of health and care services; improving people's health and wellbeing; and reducing health inequalities.**

WHEN IS IT HAPPENING?

The ICB becomes a new statutory NHS organisation on 1 July 2022. We will be working closely with our partners to ensure that we adapt to these new structures and ways of working during this transition year and into 2023.

05



We want our ICB to be the leading place in England for people in terms of their experience of care and their outcomes of care. We don't only want to add years to people's lives and life expectancy, we want to increase the quality of life; from birth through to living well, aging well and also dying well."

Samantha Allen, ICB chief executive

SIZE & SCALE



OUR ICP

The Integrated Care Partnership (ICP) is a committee of the ICB and our 13 local authorities from across the North East and North Cumbria.

The ICP is responsible for setting our key priorities and developing our strategy for health and care to meet the needs of our population by bringing together local councils, hospitals, community services, primary care, hospices, and voluntary, community and social enterprise (VCSE) organisations and Healthwatch across the region.

The ICP is made up of our four sub-regional partnerships based around our main centres of population. These are:

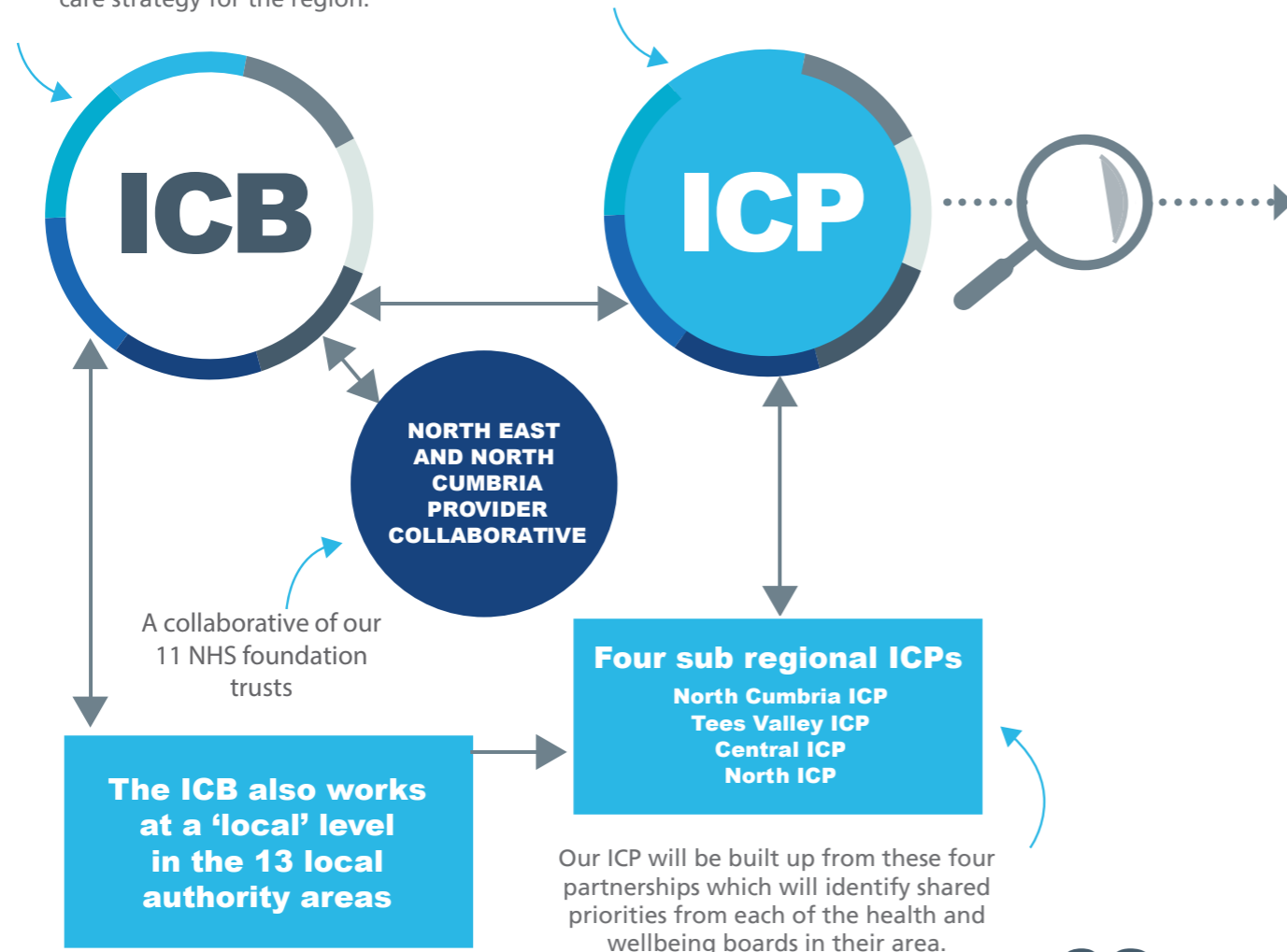
- **North Cumbria ICP**
- **Central ICP** (County Durham, Sunderland and South Tyneside)
- **North ICP** (Gateshead, Newcastle, North Tyneside, Northumberland)
- **Tees Valley ICP** (Darlington, Hartlepool, Middlesbrough, Redcar and Cleveland and Stockton-on-Tees)

These ICPs will develop a strategic picture of health and care needs from their local authority areas by working with a wide range of partners including existing health and wellbeing boards. These provide a vital forum for the NHS, local councils and other partners to assess the needs of local people and set local priorities for health and care improvement.

HOW IT WORKS

A statutory NHS organisation taking on the responsibilities of the eight CCGs and some of the functions currently held by NHS England for the commissioning of primary care and specialist hospital services that will deliver an integrated care strategy for the region.

A joint committee of the ICB and the 13 local authorities. The ICP is responsible for developing an integrated care strategy for the region.



Our ICP will be built up from these four partnerships which will identify shared priorities from each of the health and wellbeing boards in their area.



OUR AMBITIONS & PRIORITIES

We will strive to be the **best performing ICB**, working collectively to provide the best health and care for our local communities.

By working with local communities, our partner organisations and our amazing health and care staff, our aim is to **significantly improve health outcomes for people who live in our region.**

Our delivery plans will focus on the three key principals of **prevention, personalisation and performance.**

We will help people to stay healthy by addressing the causes of ill health and preventing avoidable diseases so that our population will live healthier, happier and longer lives. People need to be given more choice when they need our help and care. We know that when health and **care is personalised – built around the person and their family** – it works better for everyone.

Our performance standards and accountability will be clear. We'll encourage more innovation and collaboration and being a learning system will be at the heart of how we operate. We have made huge progress, but we know there is more to be done and we will focus our efforts on the following key areas:



OUR PEOPLE

We'll support staff in their roles and with their physical and mental wellbeing and ensure equality, inclusion and diversity for all.



LIVING WELL

We'll support people so that they don't need our help in the first place and move beyond 'treating illness' towards supporting people to manage their own condition and make the right lifestyle choices.



INNOVATION

We'll drive forward further innovations - harnessing the pioneering spirit that already exists in our region, and not being afraid of trying new things.



BEST PLACE TO WORK & TRAIN

We'll drive forward our plans to be the best region to work and train. Working collectively to recruit and retain our staff and supporting them to work differently and more flexibly in the future.



QUALITY OF LIFE

We'll enable people to live healthier and happier lives, recognising that health is influenced by many other factors, including where we live, our lifestyle and social circumstances.



BEST START IN LIFE

We'll give our children the best start in life and improve employment opportunities - working with schools and colleges to nurture young people and keep talent in the region.



JOINING UP HEALTH & CARE

We'll integrate services and provide them around patients' needs - not organisations or buildings, or systems or 'because we have always done it that way'.



REDUCING INEQUALITIES

We'll address the long standing inequalities and poor health outcomes in our region.



STANDARDS

We'll continue to raise standards so all services are high quality and delivered effectively including ensuring access to safe, quality care, at the right time and in the right place.

OUR WIDER IMPACT...

Our ICB presents a new opportunity for us to **combine our collective resources to ensure the economic, social and environmental wellbeing of all our local communities**. We are already taking positive steps towards increasing employment opportunities for local people. This includes launching an innovative region-wide apprenticeship programme across health and care.

We will work through our ICB to deliver **an ambition to be the greenest region in England by 2030**. This includes working with our partners in the public and voluntary sectors to ensure sustainability, recycling and carbon reduction across all organisations: achieving a net zero NHS carbon footprint for the emissions we control directly by 2040, and for the emissions we can influence by 2045.

We are the first region in the country to have a **faculty of sustainable health** launched by Health Education England for the North East and North Cumbria which is embedding sustainable healthcare into training for the people who work with us.



ENGAGEMENT & FEEDBACK

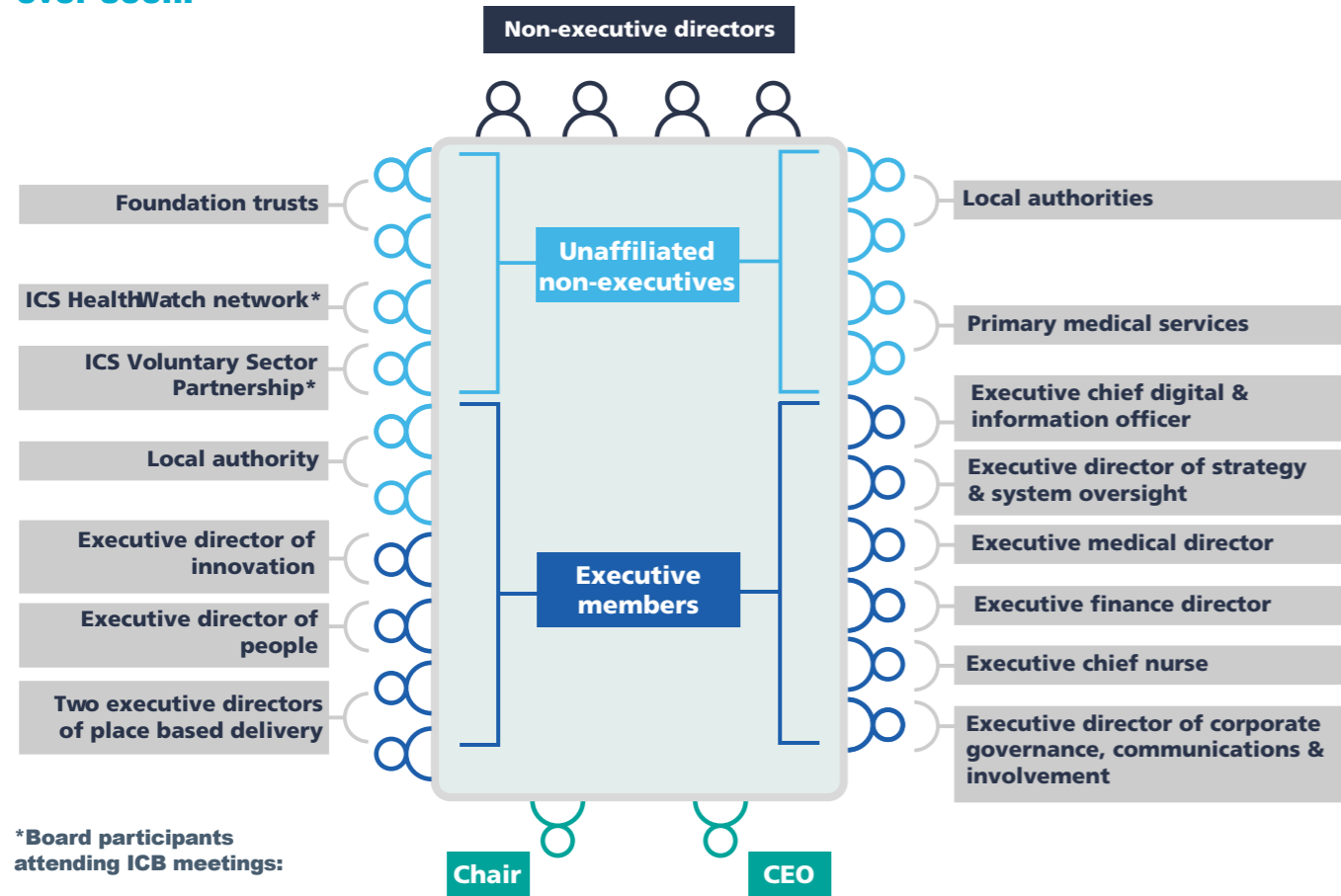
Key to the success of the ICB will be meaningful engagement with the people who use our services and the communities we serve – listening and learning from their lived experiences. This will drive the way we work together, and help us reduce the inequalities that have become more apparent through the pandemic.

We value trusted, transparent and ongoing relationships to improve and shape our services for better outcomes for all. The voices of people should be at the heart of all we do and influence the way services are planned and delivered. Healthwatch, our diverse voluntary, community and social enterprise sector (VCSE), the councils of governors of our NHS foundation trusts, patient groups and community forums, as well as our staff and partners will play a key role.

At a local level we will continue to work through existing health and wellbeing boards, which provide a vital forum for the NHS, local authorities, and other partners to assess the needs of their populations and jointly develop strategies to improve health and care. The performance of local health services will continue to be highlighted by health scrutiny committees, local councillors and local Healthwatch teams.

OUR BOARD

Our board is chaired by Professor Sir Liam Donaldson and led by chief executive, Samantha Allen. Together with other members of the board, we will be leading the delivery of one of the most **ambitious healthcare strategies our region has ever seen.**



*Board participants attending ICB meetings:

15 ICB GEOGRAPHY

